

Profiles and finishes development

CS - Coated Steel

The Isocindu panel manufacturing process begins with a steel coil, which can be used for wall or roof panels. The steel coil is zinc coated using a hot dip process, and these smooth steel coils make up the internal and external faces of the panel.

DR - Drawing or Ribbed

The ribbing or drawings of the panel faces increase its strength and can withstand stress. IsoCindu has three types of profile and two types of longitudinal ribs that are originated on the production line. These ribs prevent dents due to shear stresses.

To determine the depth of light profiling, take as a reference the European panel manufacturing standard EN 14509, which indicates the following tolerances:

$d_s \leq 1\text{mm}$	$\pm 30\%$ de d_s		d_s
$1\text{mm} < d_s \leq 3\text{mm}$	$\pm 0,3\text{mm}$		d_s
$3\text{mm} < d_s \leq 5\text{mm}$	$\pm 10\%$ de d_s		d_s

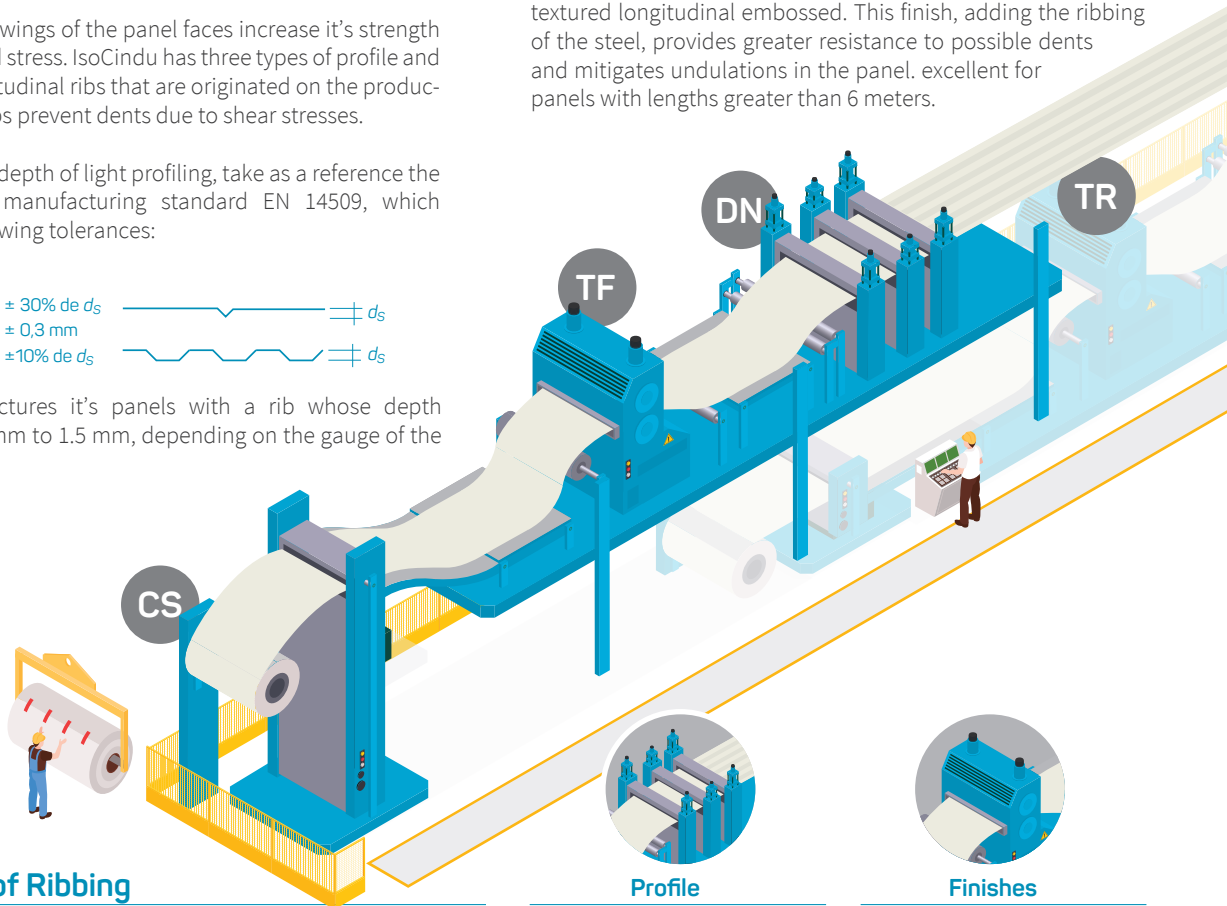
Isocindu manufactures its panels with a rib whose depth varying from 0.5 mm to 1.5 mm, depending on the gauge of the steel.

TF - Textures and Finishes

Added to the profiled faces of the panel with different options in ribbing, IsoCindu offers two textures:

Smooth Finish: comes from steel coils coated with zinc, ideal for panels with lengths less than 6 meters.

Muffled texture: it's achieved thanks to a process in the area of profiling of the steel, allowing to change from smooth to a textured longitudinal embossed. This finish, adding the ribbing of the steel, provides greater resistance to possible dents and mitigates undulations in the panel. excellent for panels with lengths greater than 6 meters.



TR - Types of Ribbing

Box: it's a micrograined metal profile tableted in sheets, ideal for interior walls and for panels with lengths between 6 and 8 meters.

Striated: it's a diamond-shaped microrib profile and provides a better view of the building. Recommended in panels with lengths less than 6 meters.

Piano: it's a flat metallic laminate, without the presence of ribbed, and is recommended for panels with lengths less than 6 meters.

